

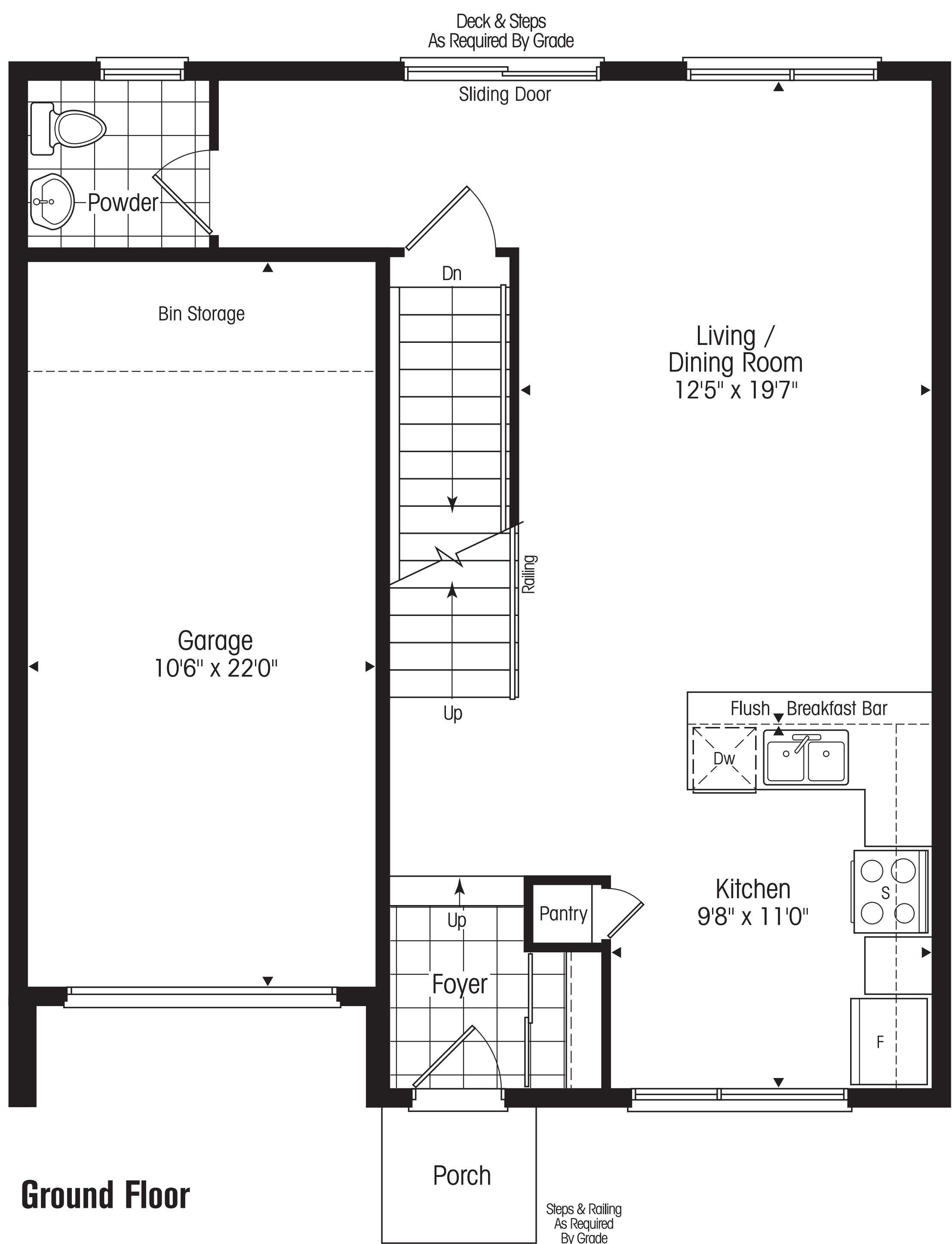


Flat roof

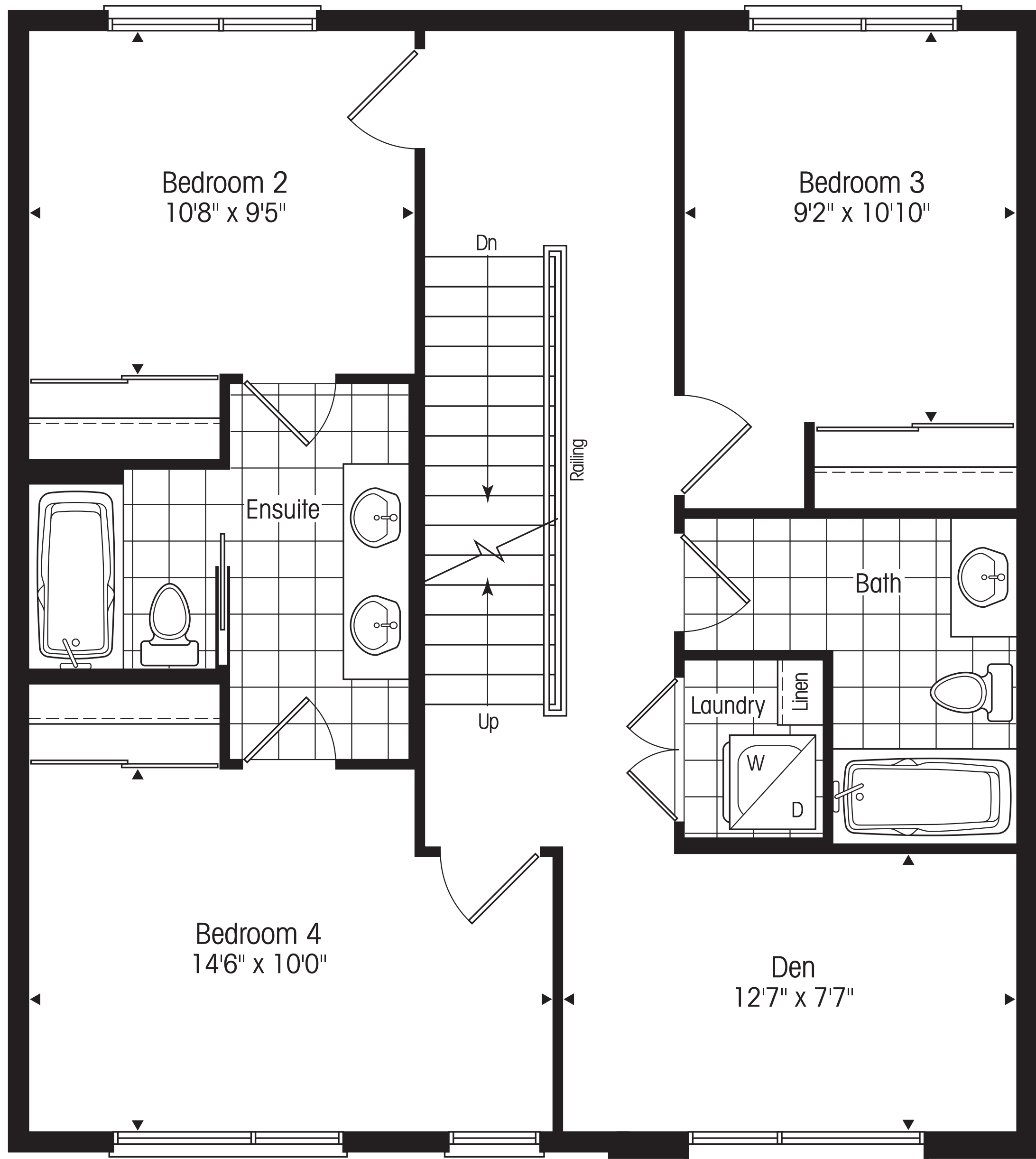


Angled roof

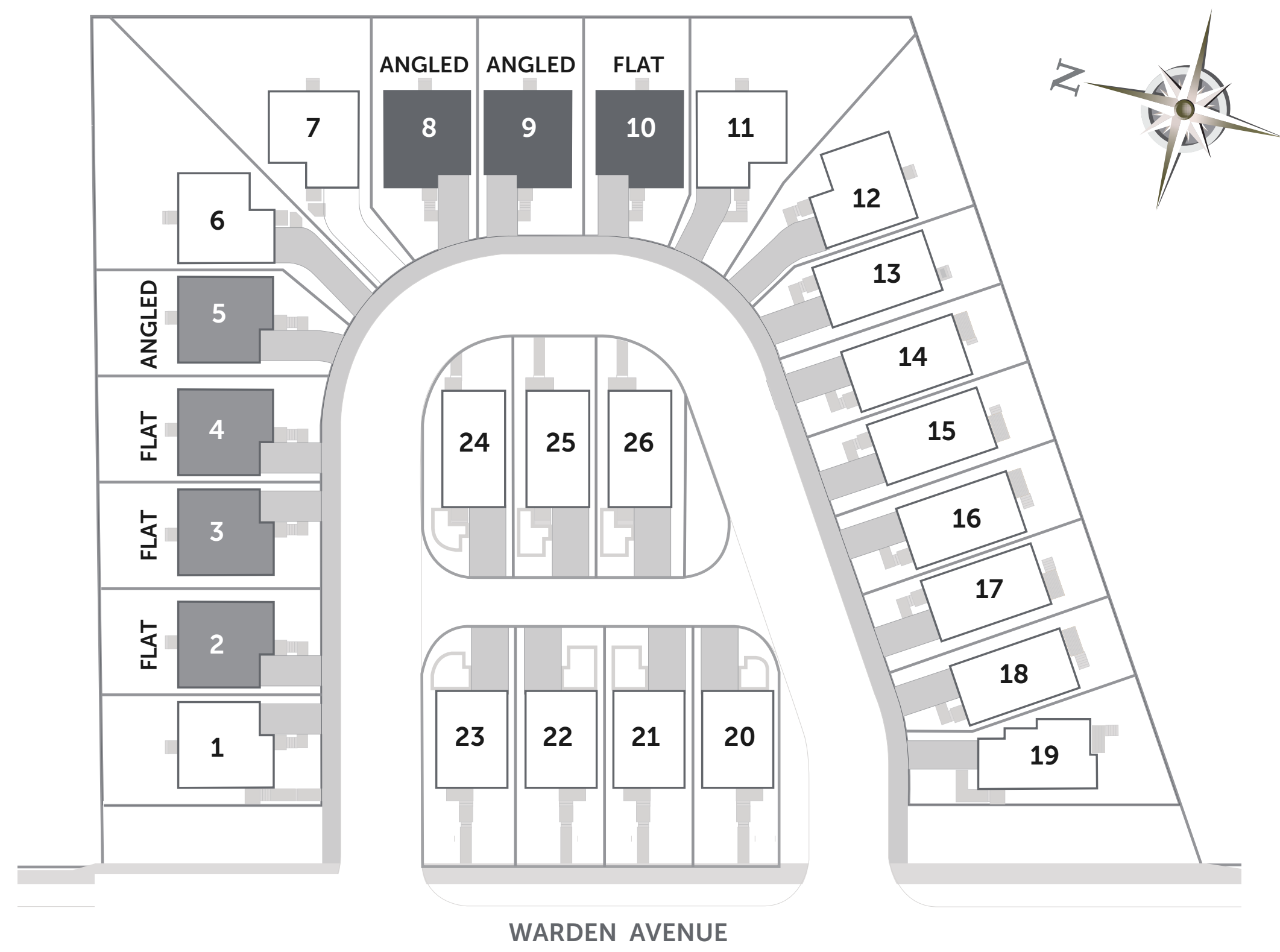
THE CROSSTOWN 2372 sf, 2326 sf



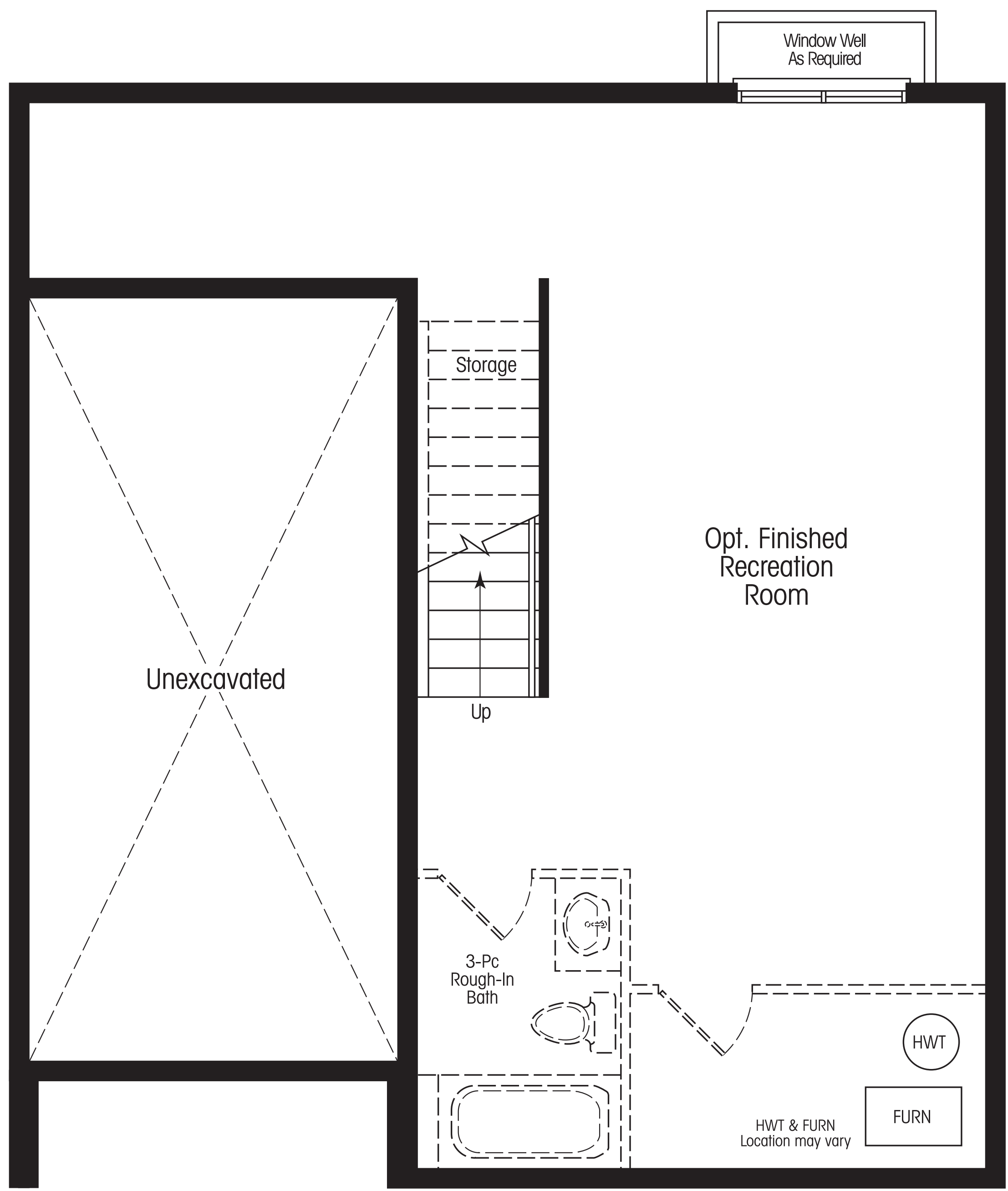
Ground Floor



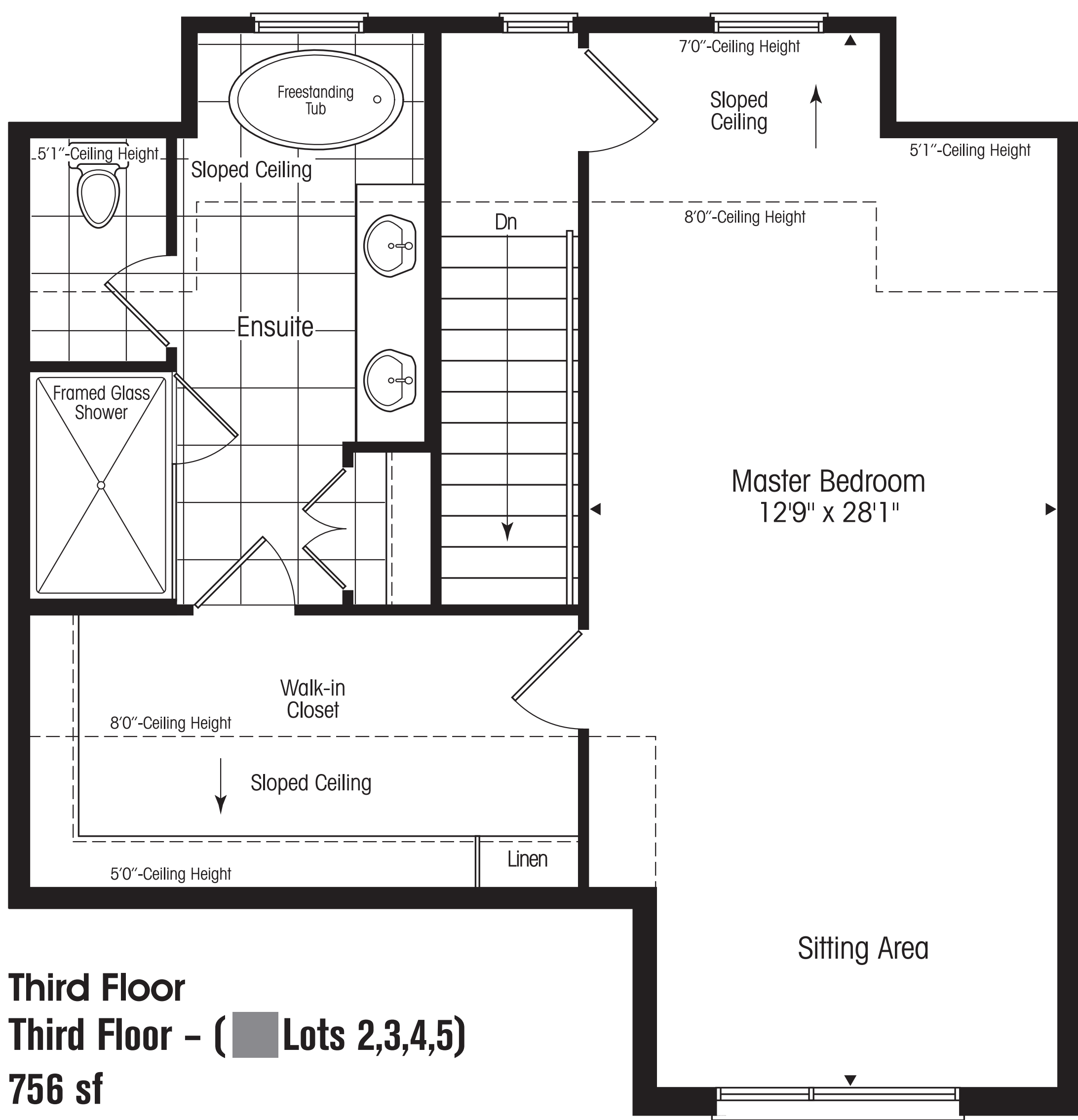
Second Floor



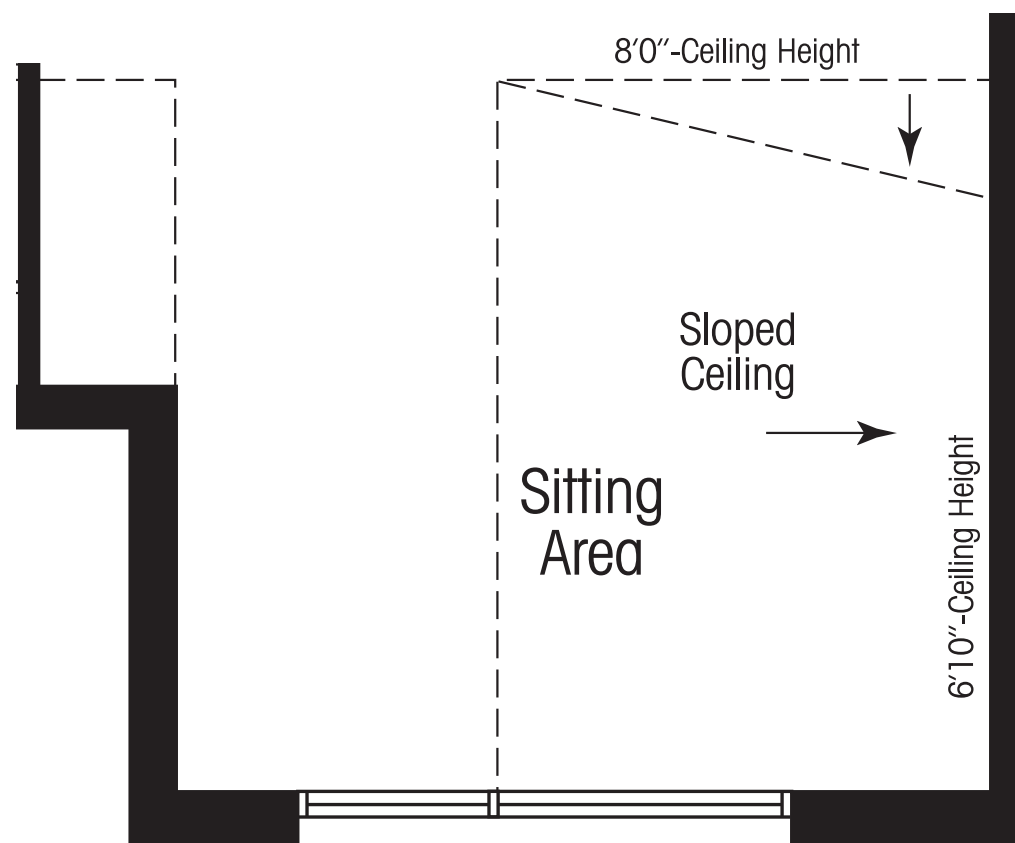
2372 sf 2326 sf



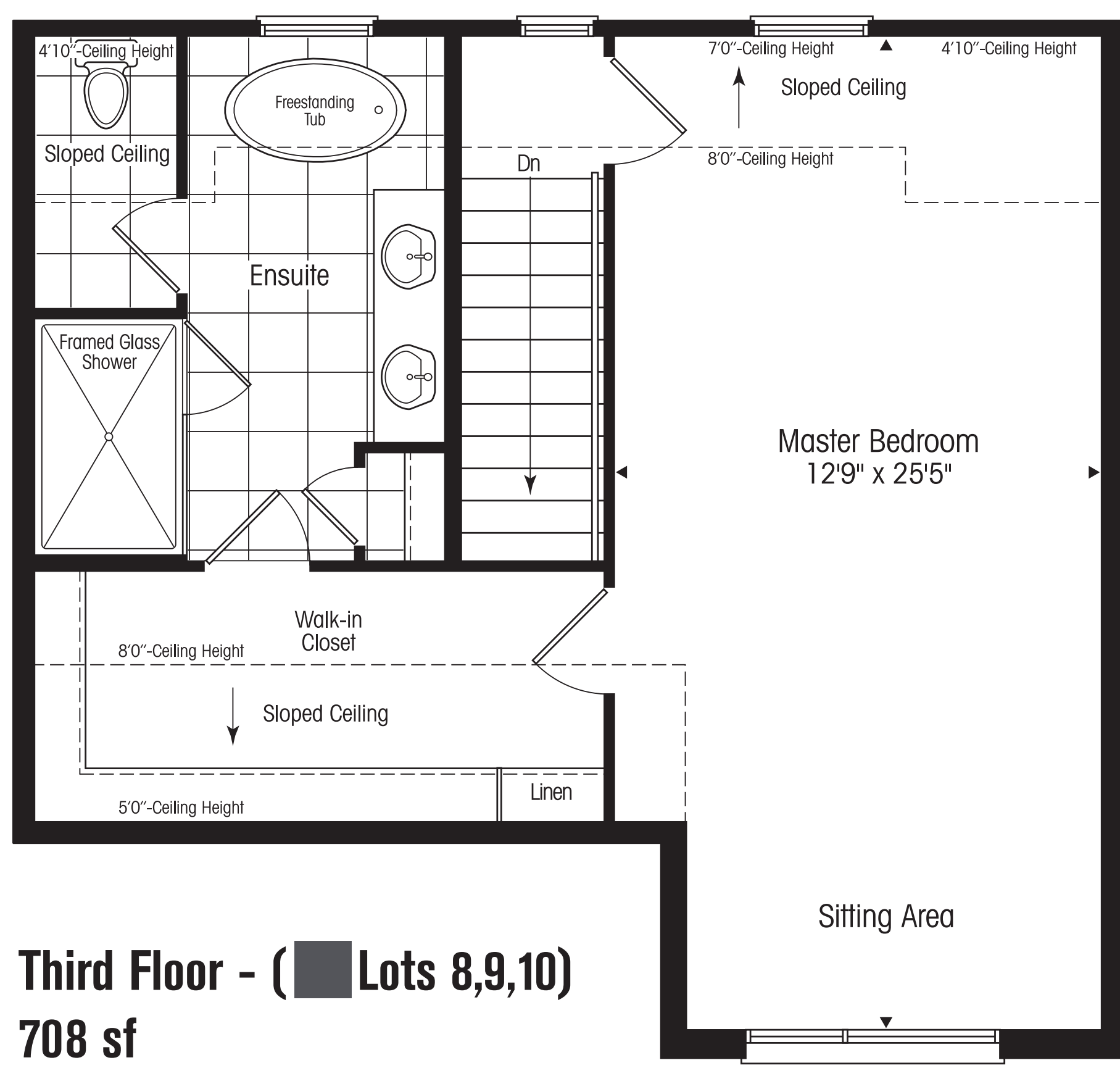
Basement - 581 sf optional finished area



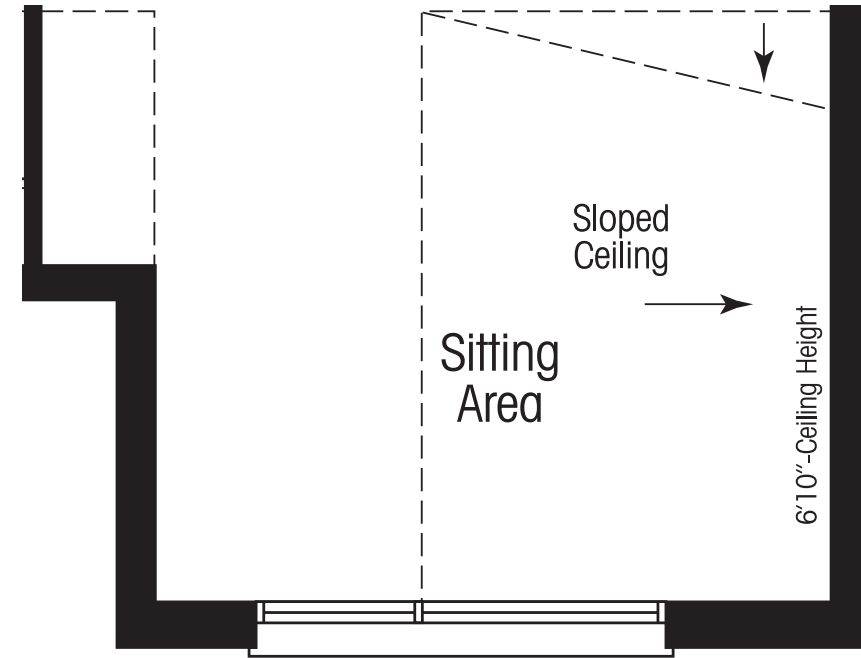
Third Floor
Third Floor - (Lots 2,3,4,5)
756 sf



Lot 5 bay



Third Floor - (Lots 8,9,10)
708 sf



Lots 8,9 bay